

Linear Straight Counter



A straight linear counter ideal for any modular application. Built with strength and durability, practical for exhibitions and easily adaptable for all locations.

features & benefits

- Anodised aluminium construction
- Flat packed, easy to transport and quick to assemble
- No tools required
- 50mm modular post system
- A wide range of counter shapes can be created by arranging multiple counters
- Linear twist and lock
- Available in 1000mm and 2000mm wide
- Carry bags are available as an optional extra (AB112A and AB222)
- Optional internal shelf PK8-S1S

hardware specifications

Hardware dimensions (mm):

LK029-001 1010(h) x 1000(w) x 500(d)

LK029-002 1010(h) x 2000(w) x 500(d)

Load Bearing:
50kg Approx

graphic size (mm):

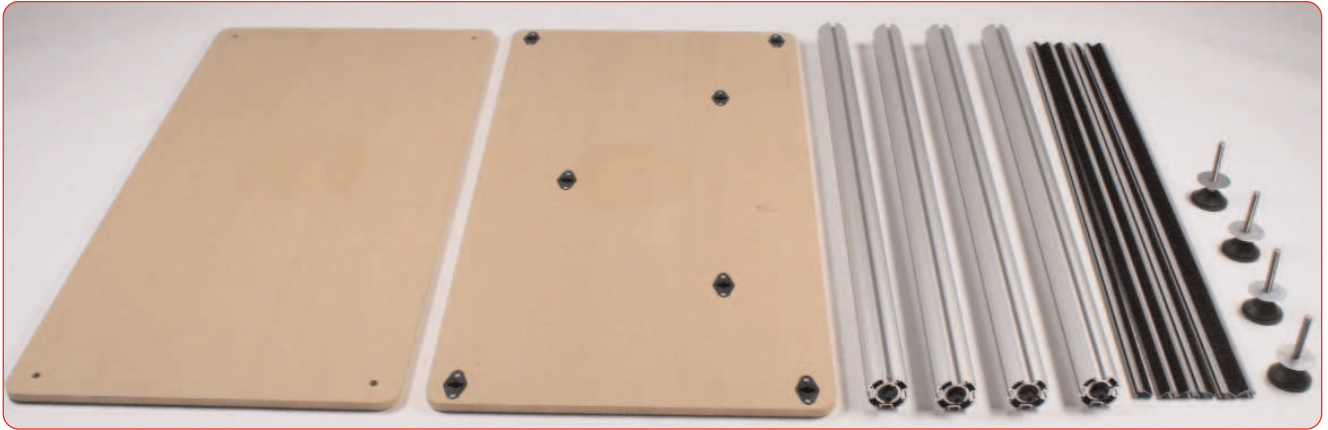
Recommended graphic size (mm):

LK029-001 - 2 x 949 x 380mm and 1x 949 x 880mm

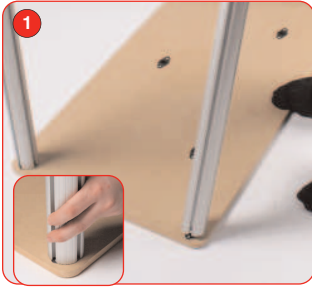
LK029-001 - 2 x 949 x 380mm and 1x 949 x 1880mm

Recommended graphic substrate:
2-3mm thick foam boarder

Assembly Instructions



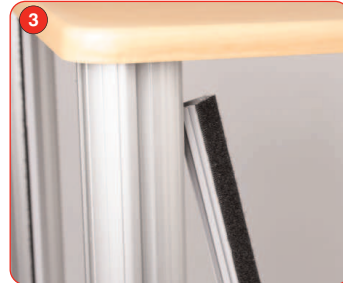
Kit Includes: 1x table top, 1x base, 4x linear 50mm round post, 4x adjustable fit, 6x wing extrusion
Kit based on **LK029-001**



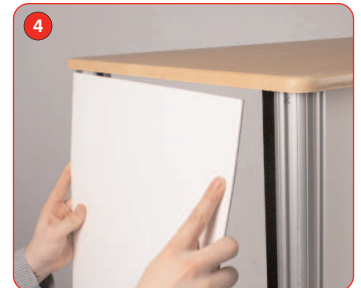
Start by placing the top of the counter face down with the twist and lock locators facing up, place the posts into the twist and lock locators and twist anti-clockwise to lock and clockwise the to unlock



place the base of the counter over the linear post and place the adjustable feet through the washer and into the base of the counter, screw into the post until in required position, Hand tighten the bolts to secure into place.

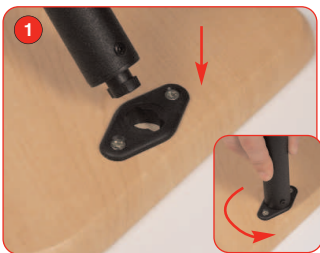


Turn the unit round the right way up, and start to attached the PVC wing extrusion. To attached the wing make sure the loop side of the PVC wing is facing out and simply click the PVC wing into the channel on the post



To attached the graphic simply place the graphic into place and push firmly against the PVC wing extrusion until in required position

Internal self assembly



To attach the internal shelf insert the twist and lock pole into the locator on the shelf



Lift the internal shelf to the shelf locators on the base side of the table top. Twist each pole into place until fully secure

