

Linear Literature holder

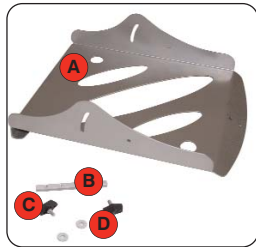
A useful and stylish accessory for Linear displays. The A4 sized leaflet holder can be mounted centrally, left or right of all Linear posts.

features & benefits

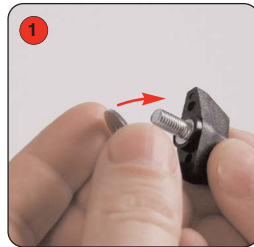
- Suitable for A4 portrait leaflets
- Left, right and central fitting options
- The holder can be angled from vertical to a 30° tilt using the side fixings
- Manufactured from Mild Steel with a high quality silver powdercoated finish
- Easy to assemble

Assembly Instructions

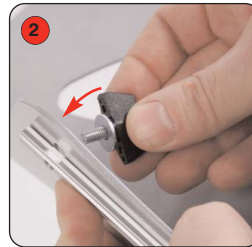
Side Fixing



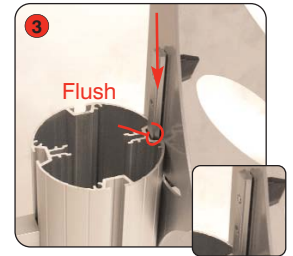
Kit includes:
Literature holder 'A', Flat bar 'B', Thumb fastener x2 'C', Washer x2 'D' and 2 x screws



1 For side mounting, place washer over the thumb fastener.



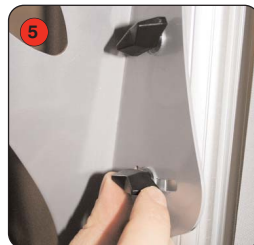
2 Fit washer and thumb fastener through the holder side and secure loosely to the flat bar. Repeat step for the 2nd thumb fastener.



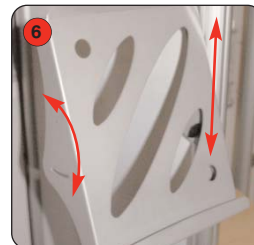
3 Slide the flat bar into the channel of the Linear post.



4 Position and angle the holder as required between 0° and 30°

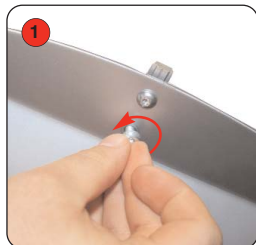


5 Tighten both thumb fasteners to secure the holder to the post.



6 Vertical position and angle of the holder can be adjusted.

Top Fixing



1 Screw flat bar through top of literature holder loosely.



2 Slide bar down through channel in post.



3 Tighten into position with an Allen Key.

hardware specifications

Overall Dimensions (mm):
315 (h) x 260 (w) x 110 (d)

Pocket depth:
20mm

Weight:
1.5kg

additional info

Material:
2mm thick mild steel